

## STARTER/GENERATOR COOLING AIR BLAST TUBE - MAINTENANCE PRACTICES

### 1. General

- A. This section provides description, operation and removal/installation information on the starter/generator cooling air blast tube.

### 2. Description and Operation

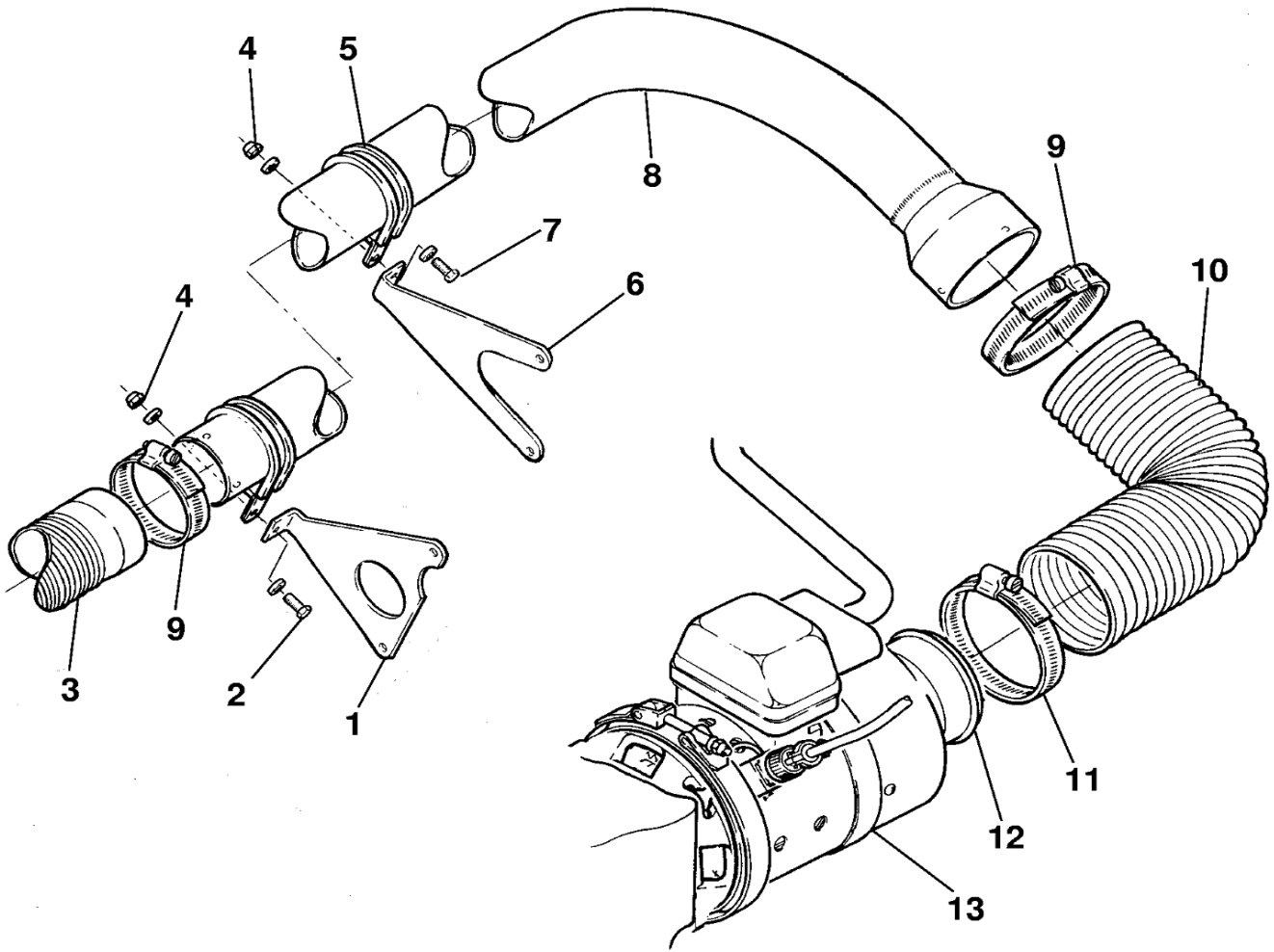
- A. Starter/generator incorporates a cooling air blast tube and hose assembly to augment cooling in flight. Tube is mounted via brackets to upper right side of induction air plenum assembly on right side of engine. Flexible hoses clamped to forward and aft ends of blast tube direct cooling air from an inlet in right nose cap through blast tube and into inlet in starter/generator cooling fan/brush cover.

### 3. Blast Tube Removal/Installation

- A. Remove Blast Tube (Refer to Figure 201).
  - (1) Open upper right cowling door to gain access to starter/generator cooling air blast tube.
  - (2) Loosen hose clamps (9) from forward and aft ends of cooling air blast tube (8) and remove forward and aft hoses (3) and (10).
  - (3) Remove nuts (4) from forward and aft clamp bolts (2) and (7).
  - (4) Remove blast tube (8) from engine.
- B. Install Blast Tube (Refer to Figure 201).
  - (1) Position clamps (5) on blast tube (8) and align clamps with brackets (1) and (6). Install bolts (2) and (7) and nuts (4).
  - (2) Install forward and aft blast hoses (3) and (10) on blast tube (8) and tighten hose clamps (9).
  - (3) Close upper right cowling door.

Figure 201 : Sheet 1 : Cooling Air Blast Tube Installation

A21667



1. FORWARD BRACKET
2. CLAMP BOLT
3. FORWARD COOLING AIR BLAST HOSE
4. NUT
5. CLAMP
6. AFT BRACKET
7. CLAMP BOLT
8. COOLING AIR BLAST TUBE
9. HOSE CLAMP
10. AFT COOLING AIR BLAST HOSE
11. HOSE CLAMP
12. COOLING FAN/BRUSH COVER INLET
13. STARTER/GENERATOR

2658X3004